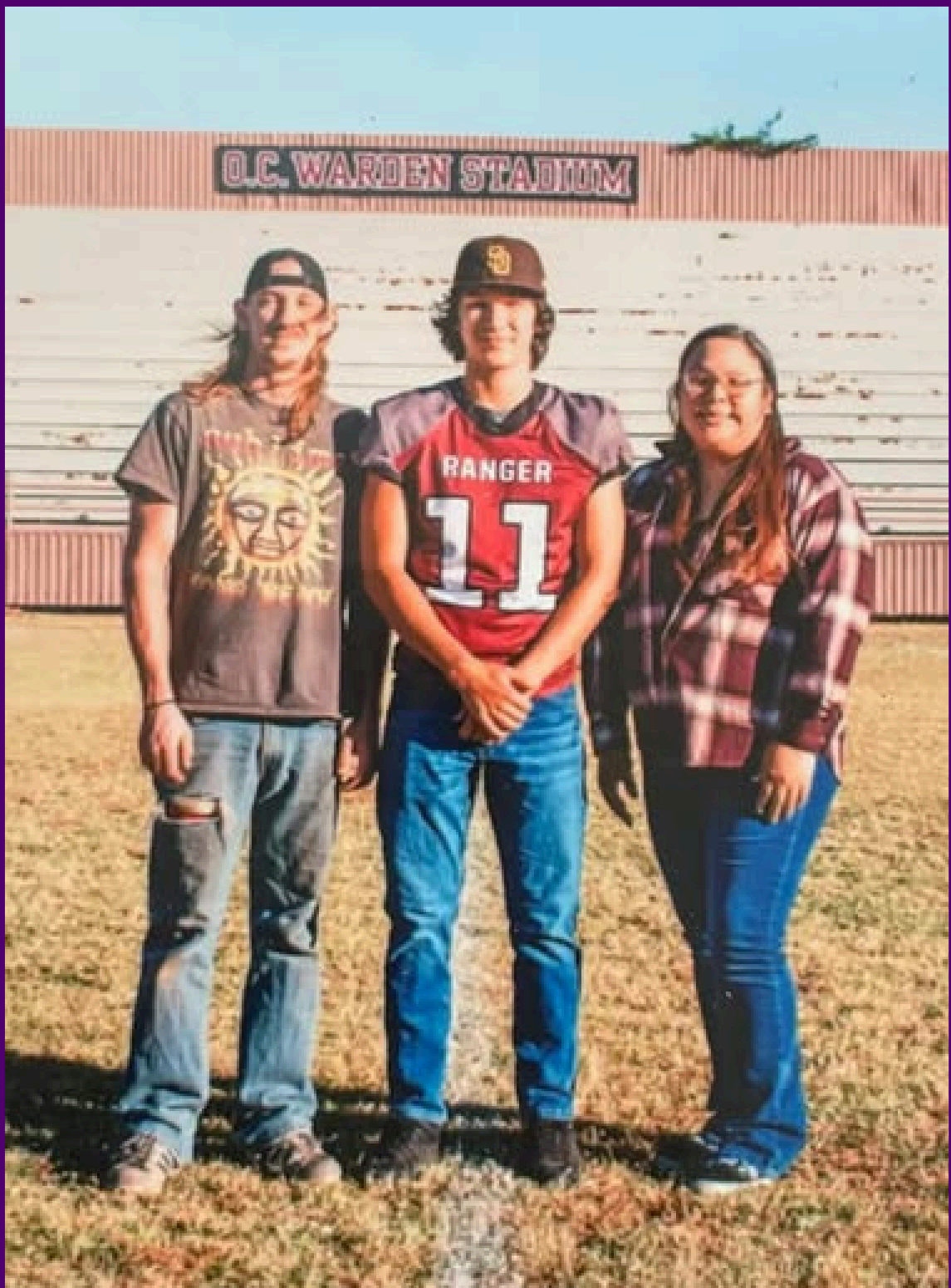




RANGER COLLEGE INSIDE STUDENT SERVICES



GETTING TO KNOW... DATA ENTRY SPECIALIST RECHINDA PERRY

WHEN DID YOU BEGIN SERVING AT RANGER COLLEGE?
NOVEMBER 27, 2023

WHERE WERE YOU BORN?
DALLAS, TX

FAVORITE LOCAL RESTAURANT
MAE'S MEAT MARKET AND CAFE

WHAT IS YOUR IDEAL VACATION DESTINATION?
MORaine LAKE, LAKE LOUISE AND BANFF NATIONAL PARK IN ALBERTA, CANADA. I AM NOT THAT OUTDOORSY BUT I LOVE MOUNTAINS, AND LAKES.

WHAT IS A BOOK, MOVIE, OR SERIES RECOMMENDATION?
I LIKED THE ELIN HILDERBRAND PARADISE SERIES. I LIKE HER BOOKS, AND ALLLLL THE MYSTERY BOOKS. DEAN KOONTZ, TONY HILLERMAN, AGATHA CHRISTIE, RILEY SAGER, STEPHEN KING.

GUILTY PLEASURE
SOMETIMES... I WATCH THE REAL HOUSEWIVES OF BEVERLY HILLS. I AM ONLY ON SEASON 4 OR 5, SO I AM WAY BEHIND.

MEANINGFUL RANGER COLLEGE MEMORY
MY TEAM SURPRISED ME WITH A BIRTHDAY CAKE, SINGING AND A LITTLE PARTY. IT MADE ME HAPPY THAT THEY WANTED TO MAKE MY DAY BRIGHTER, AND IT DID!

CARING CAMPUS MOMENT
I LOVE HOW EVERYONE GOES OUT OF THEIR WAY TO HELP THE STUDENTS. WHETHER IT IS QUESTIONS ABOUT CLASSES, THINGS THEY NEED, EVEN BIG ISSUES. EACH PERSON HERE WILL NOT REST UNTIL THERE IS A SOLUTION.

RANGERS SPLIT GAMES IN FLORIDA

THE RANGER COLLEGE MEN'S BASKETBALL TEAM SPLIT ITS TWO GAMES THIS WEEK AT THE SUNCOAST CREDIT UNION ARENA IN FORT MYERS, FLA. ANGELO KAMBALA, C.J. EVANS, HAYDEN LEDBETTER AND ADDISON ARCHER ALL SCORED INTO DOUBLE FIGURES ON FRIDAY AND HELPED CARRY THE RANGERS TO A 98-88 WIN OVER INDIAN RIVER ON THE FINAL DAY OF THE ROAD TRIP.

KAMBALA AND EVANS TURNED IN SENSATIONAL EFFORTS FOR RANGER. KAMBALA NAILED NINE SHOTS FROM BEHIND THE 3-POINT ARC AND ROLLED UP A SEASON-HIGH 34 POINTS. EVANS RECORDED A DOUBLE-DOUBLE WITH 16 POINTS AND 10 BOARDS.

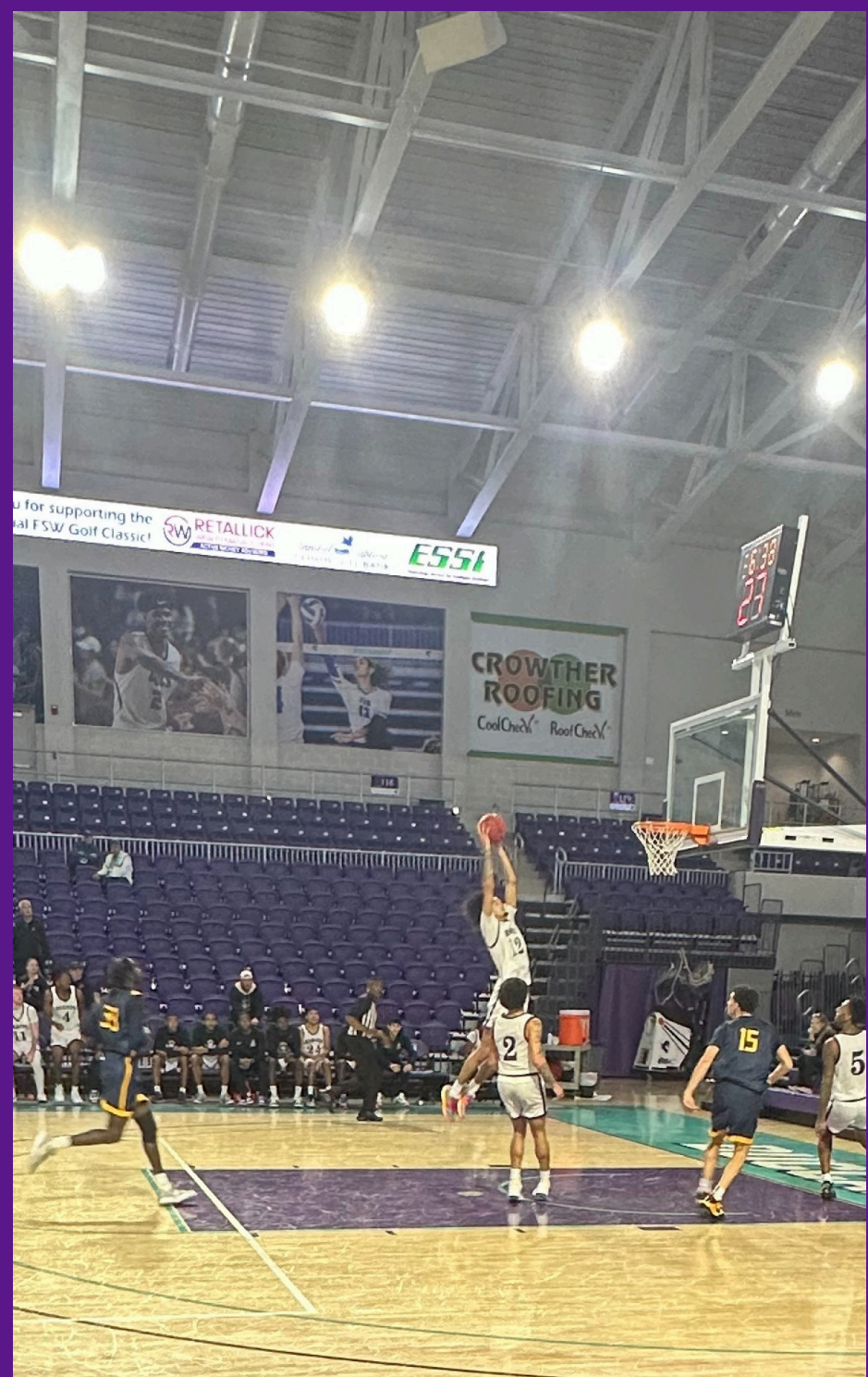
LEDBETTER AND ARCHER ADDED 13 AND 10 POINTS, RESPECTIVELY.

THE RANGERS JUMPED ON TOP EARLY. THEY OUTSCORED INDIAN RIVER BY A 49-39 CLIP IN THE INITIAL 20 MINUTES OF PLAY. THE PIONEERS NEVER RECOVERED.

INDIAN RIVER STRUGGLED FROM THE FREE THROW LINE AGAINST RC THROUGHOUT THE CONTEST. THE PIONEERS CONNECTED ON JUST 10 OF THEIR 30 FREE THROW ATTEMPTS. THE RANGERS BURIED 15 OF THEIR 30 TRIES FROM THE CHARITY STRIPE.

NATIONALLY-RANKED FLORIDA SOUTHWESTERN STATE COLLEGE SPOILED RANGER'S DEBUT IN FLORIDA. THE NATION'S 25TH-RANKED SQUAD, FLORIDA SOUTHWESTERN USED A 39-25 RUN IN THE FIRST HALF TO DRIVE THEMSELVES TO AN 83-61 WIN ON THURSDAY NIGHT.

KAMBALA LED ALL RC SCORERS WITH 17 POINTS. MASON AND EVANS ADDED 12 AND 11, RESPECTIVELY.



SOCIAL MEDIA POST OF THE WEEK

 **rangercollege**
Stephenville, Texas



 Liked by **dworrels** and **38 others**
rangercollege The leadership team from Ranger College presented at the Stephenville Chamber's State of Higher Education Luncheon! 🎓🌟 They discussed the vital role of education in our community, shared the latest initiatives, and future opportunities for collaboration.

 **Ranger College Student Support Services** updated their cover photo.
Nov 19 · 🌐


This semester we have toured Angelo State, Abilene Christian, Midwestern, Howard Payne, and University of North Texas. We have watched our students succeed as athletes and in the classroom. We have explored an unreal art musesum, reviewed for tests, applied for universities, cooked out, and dressed up a lot. It has been an amazing fall and we can't wait to see what the spring brings!








RANGER COLLEGE
STUDENT SUPPORT SERVICES
ADVISING - TUTORING - FINANCIAL AID ASSISTANCE - CAMPUS TOURS - WORKSHOPS - TRIPS - TRANSFER ASSISTANCE - EVENTS - SUPPORT


Investing in Your Tomorrow



 **rangercollege**
Ranger Junior College



 Liked by **dworrels** and **210 others**
rangercollege Check out the new fountain on the main campus 💜 Thank you Paradise Pools for the beautiful work!!! 📸 photo credit: paradise pools [#leaveyourmark](#) [#rangercollege](#)

Free Counseling.

META Teletherapy



Free private sessions - choose your own counselor

Ranger College is a limited number of sessions

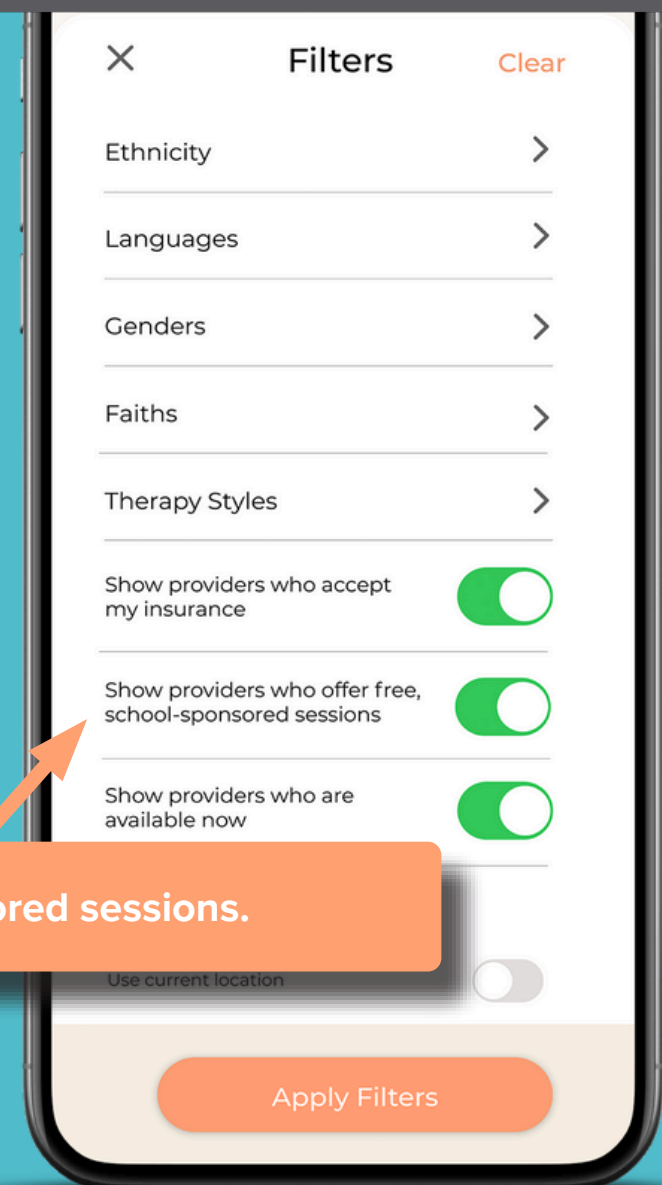
Your mental health matters, especially while in school. Talking to a licensed counselor can help you cope with any emotional turmoil you're experiencing, including feelings of isolation, depression, stress, and anxiety. **Ranger College will cover the costs for a limited number of counseling sessions with META providers.**

Download the free app today to get started: meta.app/students.

Note: Selecting too many filters may prevent providers from displaying.



Use the advanced filters to show providers offering school-sponsored sessions.



meta.app/students | 833-844-META

THE HOLIDAYS ARE COMING UP AND THIS IS THE TIME THAT MOST PEOPLE LOOK FORWARD TO SPENDING TIME WITH THEIR FAMILIES. SOME OF US AREN'T NEAR OUR FAMILIES AND MUST BE CREATIVE WITH WHAT OUR HOLIDAYS WILL LOOK LIKE. I HAVE FAMILY STATES AWAY, SO I ALWAYS LOOK FOR PUBLIC EVENTS THAT OUR COMMUNITY PUTS TOGETHER. IF YOU FOLLOW THE EASTLAND COUNTY TODAY FB PAGE, THEY POST THESE EVENTS WITH ALL THEIR INFO. THAT PAGE IS MY GO-TO SINCE WE HAVE NO FAMILY NEARBY.

OUR LIBRARY HOURS ARE GOING TO BE A LITTLE DIFFERENT FOR THE HOLIDAYS, SO I'LL ATTACH THE FLYERS TO THIS POST.

Golemon Library
2024 – 2025 holiday hours

December 2024 and January 2025

S	M	T	W	T	F	S
1 4:30 to 9:30	2 8:00 to 9:30	3 8:00 to 9:30	4 8:00 to 9:30	5 8:00 to 6:00	6 8:00 to 1:00	7 Closed
8 Closed	9 8:00 to 6:00	10 8:00 to 6:00	11 8:00 to 6:00	12 8:00 to 6:00	13 8:00 to 1:00	14 Closed
15 Closed	16 8:00 to 6:00	17 Closed for holiday party	18 Closed	19 Closed	20 Closed	21 Closed
22 Closed	23 Closed	24 Closed	25 Closed	26 Closed	27 Closed	28 Closed
29 Closed	30 Closed	31 Closed	1 Closed	2 Closed	3 Closed	4 Closed
5 Closed	6 8:00 to 6:00	7 Closed for PD	8 Closed for PD	9 Closed for PD	10 8:00 to 1:00	11 Closed
12 Closed	13 Back to regular hours	14	15	16	17	18

OUR LIBRARY HOURS ARE GOING TO BE A LITTLE DIFFERENT FOR THE HOLIDAYS, SO I'LL ATTACH THE FLYERS TO THIS POST.

S	M	T	W	T	F	S
1 4:30 to 9:30	2 8:00 to 9:30	3 8:00 to 9:30	4 8:00 to 9:30	5 8:00 to 6:00	6 8:00 to 1:00	7 Closed
8 Closed	9 8:00 to 6:00	10 8:00 to 6:00	11 8:00 to 6:00	12 8:00 to 6:00	13 8:00 to 1:00	14 Closed
15 Closed	16 8:00 to 6:00	17 Closed for holiday party	18 Closed	19 Closed	20 Closed	21 Closed
22 Closed	23 Closed	24 Closed	25 Closed	26 Closed	27 Closed	28 Closed
29 Closed	30 Closed	31 Closed	1 Closed	2 Closed	3 Closed	4 Closed
5 Closed	6 8:00 to 6:00	7 Closed for PD	8 Closed for PD	9 Closed for PD	10 8:00 to 1:00	11 Closed
12 Closed	13 Back to regular hours	14	15	16	17	18



DECEMBER IS
UNIVERSAL
HUMAN
RIGHTS
MONTH